



ANDERSON PROCESS

SANITARY PROCESS EQUIPMENT FOR RELIABLE AND SAFE PRODUCTION



SANITARY SOLUTIONS



PUMPS

AMPCO AC/AC+ CENTRIFUGAL PUMPS



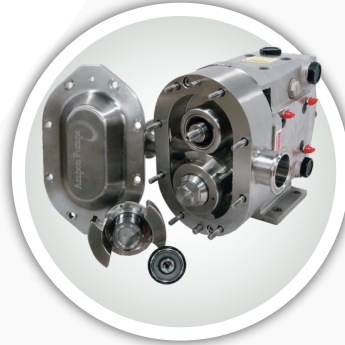
- Flows up to 1,100 GPM
- Pressures up to 60 psi
- Viscosities up to 1,200 cPs
- 316L stainless steel construction
- 4 seal options available
- 3-A Sanitary Standard 18-03

AMPCO TWIN SCREW PUMPS



- Flows up to 1,321 GPM
- Pressures up to 362 psi
- Viscosities up to 1,000,000 cPs
- Speeds up to 3,000 RPM
- Max port sizes up to 6"
- Max partricle sizes up to 2.3"

AMPCO ZP CIRCUMFERENTIAL PISTON PUMPS



- Flows up to 310 GPM
- Pressures up to 500 psi
- Viscosities up to 1,000,000 cPs
- ZP1, ZP1+, ZP2 & ZP3 Series
- 3-A Sanitary Standard 18-03 and EHEDG Certified

BJM SUBMERSIBLE PUMPS



- Flows up to 911 GPM
- Sizes available from 2" to 6"
- Motor ratings from 1 HP to 20 HP
- 316 cast stainless steel construction
- Shredder action non-clog impellers
- FKM elastomers

ATLAS COPCO GVS A SERIES VACUUM PUMPS



- Oil-lubricated rotary vane vacuum pumps for food packaging and other tough industrial applications
- Capacity: 11-494 ACFM
- Ultimate Vacuum: 29.9 in-HgV

FLUX DRUM PUMPS



- For 55 gallon drums, totes & IBC's
- Flows up to 12 GPM
- Pressures up to 116 psig
- Viscosities up to 100,000 cPs
- Electric and pneumatic motors
- ATEX, FDA, & 3-A Certified

GOULDS CENTRIFUGAL PUMPS



- Flows up to 175 GPM
- Up to 150 ft head
- Pressures up to 125 psi
- 316L stainless steel construction
- High efficiency enclosed impeller
- John Crane mechanical seal design

GRACO SANIFORCE PISTON PUMPS



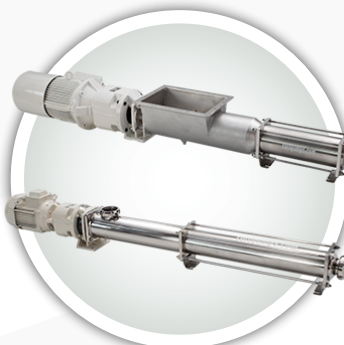
- Flows up to 14 GPM
- Fluid pressures up to 1,200 psi
- Viscosities up to 100,000 cPs
- Drum, bin and stubby pump lengths
- SaniForce 2:1, SaniForce 6:1, SaniForce 5:1 & SaniForce 12:1

MOUVEX ECCENTRIC DISC PUMPS



- Flows up to 286 GPM
- Pressures up to 232 psi
- Temperatures up to +212°F
- Clean-in-place (CIP) and Sterilize-in-place (SIP)
- 3-A, EHEDG & FDA Certified

ROTO PROGRESSIVE CAVITY PUMPS



- Flows up to 380 GPM
- Pressures up to 348 psi
- IDE, SMS & RJT connections
- Hygienic quality gland packing or mechanical seal options
- Smooth finish stainless steel

THOMAS HIGH PRESSURE PUMPS



- Flows up to 400 GPM
- Pressures up to 2,300 psi
- Pump speeds up to 4,380 RPM
- Options include T-GTO, T-GTO XD & T-GEAR Series
- Made in the USA

WILDEN DIAPHRAGM PUMPS



- Flows up to 231 GPM
- Pressures up to 250 psi
- Sizes available from 1/4" to 3"
- ADS options: Pro-Flo, Pro-Flo Shift
- Complies with FDA, USP VI, 3A, CE, ATEX and EHEDG standards

PROCESS EQUIPMENT & HOSE

AMPCO INLINE MIXERS & BLENDERS



- DRY-blend, SHEAR-blend, POWDER-max, SBH blenders and SBI pumps
- Flows up to 510 GPM
- Powder feed rates up to 350#/min
- Viscosities up to 2,500 cPs

SHARPE PORTABLE MIXERS



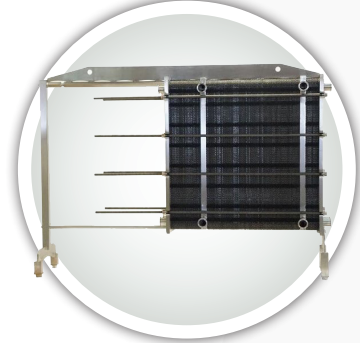
- Tank sizes up to 5,000 gallons
- Viscosities up to 15,000 cPs
- Clamp, plate or flange mounted
- Direct drive, gear drive, thrifty and USDA approved stainless steel models available

SHELCO MICROVANTAGE HOUSINGS



- MicroVantage HPI/HPV Series
- MicroVantage Sanitary SFH Series
- Equipped with 222, 226 or DOE style cartridge connectors
- 316L stainless steel construction
- Replacement cartridge filters

THERMALINE GASKETED PLATE HEAT EXCHANGERS



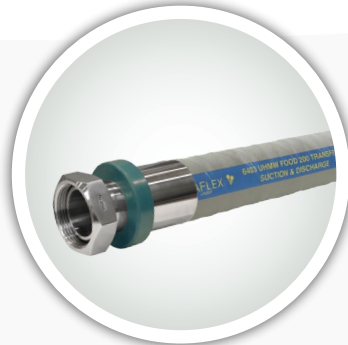
- Deep channels for gentle processing of food products and cleanliness
- Complies with 3-A requirements
- Automated open/closed designs
- 3-A shell & tube heat exchangers also available

TUDERTECHNICA GLIDETECH BUTYL HOSE



- Premium grade low permeation flexible suction and delivery hose for wine and spirits
- Extra flexible corrugated cover
- Good for CIP (clean-in-place)
- 3-A Sanitary Standard 18-03

NOVAFLEX UHMW FOOD SUCTION & DISCHARGE HOSE



- Recommended for special applications that require smooth tubes and easy to clean surfaces
- 3/4" to 4" I.D. options
- Consistent 200 psi rating
- FDA odor and tasteless tube

CONTINENTAL VINTNER RESERVE HOSE



- Used for transferring wine, beer, potable water and more
- Consistent 250 psi rating
- White chlorobutyl tube
- Conforms to FDA, USDA and 3-A Sanitary Standard 18-03

CONTINENTAL WASHDOWN HOSE



- Used in food processing plants, dairies and breweries
- Microban product protection cover
- Blue Fortress 300
- Super Sani-Wash 300
- Yellow Fortress 300

ACCESSORIES & SANITARY EQUIPMENT



ATTACHMENT METHODS



WASHDOWN ACCESSORIES



Our Sanitary LINE CARD

Pump Manufacturers



Hose & Fittings



Filtration



Process



Custom Sanitary Solutions
ENGINEERING, DESIGN & BUILD SERVICES



Need a custom skid or sanitary system? Our experienced Engineering team will guide you through the process and offer solutions guaranteed to meet your needs.

Not all products available in all locations

Wisconsin Corporate
21365 Gateway Court
Brookfield, WI 53045
(262) 784-3340

Illinois Branch
960 Oak Creek Drive
Lombard, IL 60148
(630) 782-6834

Indiana Branch
8104 Woodland Drive
Indianapolis, IN 46278
(317) 875-6900

Michigan Branch
41304 Concept Drive
Plymouth, MI 48170
(248) 476-7782

Ohio Branch
4891 Van Epps Road
Brooklyn Heights, OH 44131
(216) 739-1600

AndersonProcess.com · Sales@AndersonProcess.com

Serving Illinois, Indiana, Iowa, Kentucky, Michigan, Ohio and Wisconsin